

Air Pavilion - The Magna Project UK - RIBA Sterling Award 2001

Architect – Wilkinson Eyre

One of the four key elements of the exhibit is the giant 'zeppelin' like shroud, suspended 15 metres up which envelops the high level platform. The ETFE form is suspended entirely from cables which are tied back to the existing building envelope.



Kings Waterfront, Liverpool

Architect – Wilkinson Eyre

The new iconic Arena and Conference centre is the largest new development in Liverpool. Responsible for the design of the multi-curved ETFE roof over the central 'Galleria' area forming the key visual entrance feature of the development. The roof is 14m wide by 120m long with curved glass canopy and entrance facades at either end.



Bradford University

Architect – Rance Booth Smith

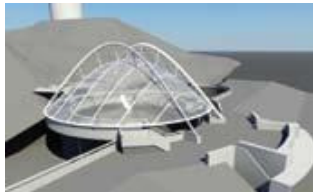
This new atrium roof was part of a project to refurbish the campus buildings and forms an impressive new café / entrance area for the students. The lightweight ETFE arches span 40m from ground level, rising four storeys to rest on the roof of the link block. The construction of the adjacent buildings meant the atrium steel work essentially needed to work independently. The tubular trusses support the ETFE cushions, which form the roof enclosure.



Dudley Zoo, Orang-utan Exhibit

Architect – Kay Elliotts

This stunning concept was part of the initial concept designs for the refurbishment of Dudley Zoo. The brief was to design an elegant and transparent roof to form a cover to the then external animal exhibit. The concept was to cover the existing Tecton Building in a sympathetic way that did not permanently affect the listed building.



John Wheatly College, Scotland

Architect – ABK Architects

The project is a new educational facility of 6,000sq m on a brownfield site. A key feature of the new campus is its sustainable development philosophy. The ETFE roof incorporated into the building uses minimal embodied energy in its production and further contributes to the sustainability aspects of this design by providing photovoltaic cells within the foil layers.



ERROR: undefined
OFFENDING COMMAND: ~

STACK:

-savelevel-